

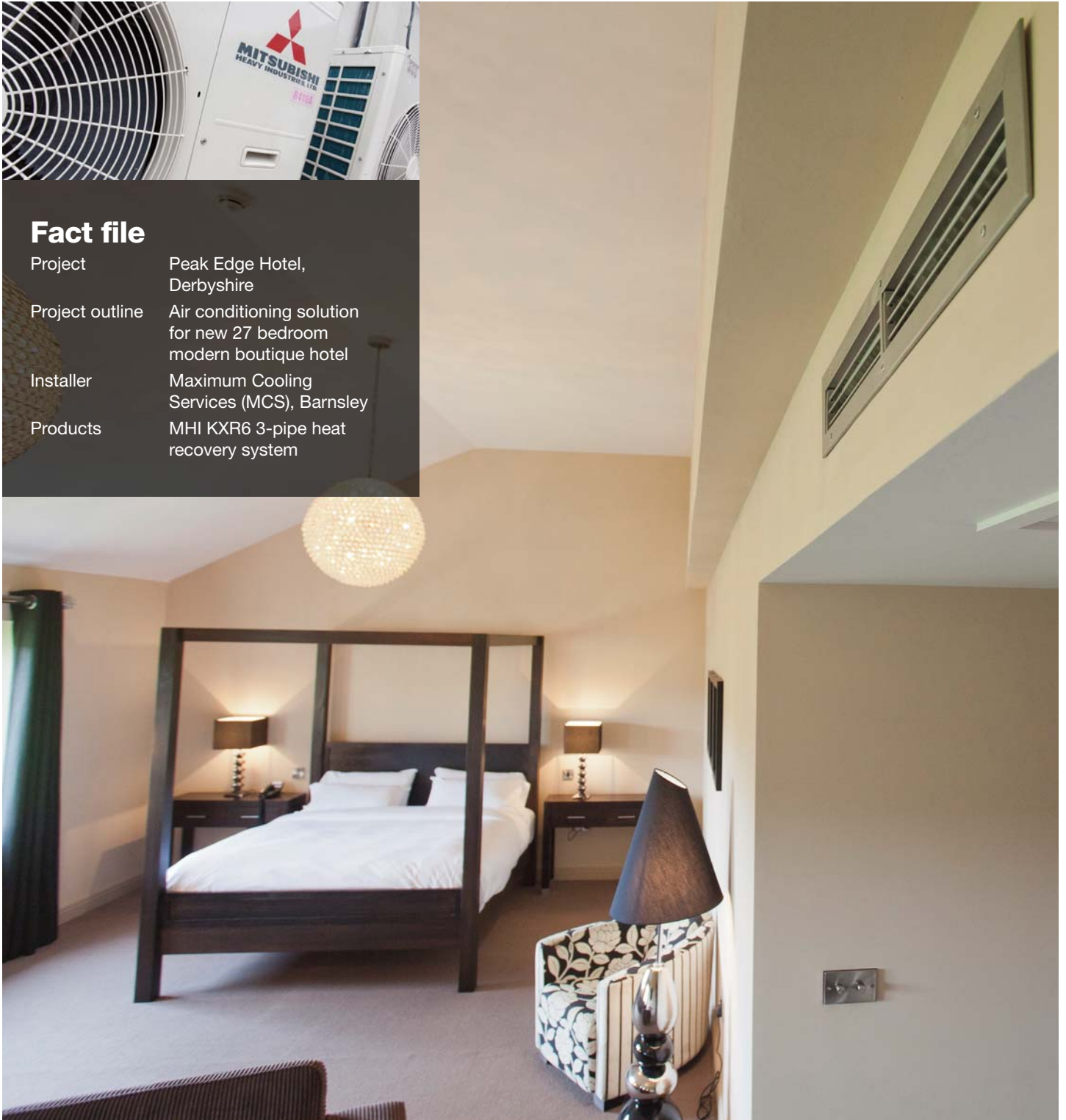
Case study: Hotels

Heat recovery system saves money at Red Lion Hotel in Derbyshire



Fact file

Project	Peak Edge Hotel, Derbyshire
Project outline	Air conditioning solution for new 27 bedroom modern boutique hotel
Installer	Maximum Cooling Services (MCS), Barnsley
Products	MHI KXR6 3-pipe heat recovery system



Case study: Hotels

Heat recovery system saves money at Red Lion Hotel in Derbyshire



The latest climate control technology from Mitsubishi Heavy Industries (MHI) is all part of the service for guests staying in a new modern boutique hotel extension to the Red Lion Bar and Bistro in the beautiful Derbyshire countryside. A VRF heat recovery solution with discreet ducted indoor units provides heating and cooling as required in each of the 27 bedrooms, while a Twin Split System keeps the hotel reception at a comfortable temperature for guests and staff.

Utilising MHI's advanced inverter technology, both systems adjust compressor output to match demand from indoor units to ensure consistent temperature control and achieve energy savings of up to 38%. The high efficiency MHI air conditioning package for the Peak Edge Hotel at the Red Lion in the Peak District near Chesterfield was supplied by distributor 3D Air Sales Ltd and installed by Barnsley-based Maximum Cooling Services (MCS).

The 3-pipe heat recovery system from MHI's KXR6 range allows different rooms to function in cooling or heating mode simultaneously, with surplus heat from one providing useful energy for the other. Two outdoor units of 40kW and 50KW drive a total of 27 ducted indoor units – one in each hotel bedroom.

Rob Smith, Director of MCS, says MHI's comprehensive choice of VRF

and Split Systems offered the best value solution for the new boutique hotel. He comments: "The heating and cooling capacity of indoor units from MHI's FDUM Ducted System were specified to suit the room size, which range from superior double bedrooms to luxury suites. And although space was restricted we were able to install the compact units within the existing ceiling void above each room without additional ceiling work." FDUM ducted indoor units are supplied as standard with a Mitsubishi RC-E4 remote controller. Rob Smith continues:

“Although space was restricted we were able to install the compact units within the existing ceiling void above each room without additional ceiling work”

“We've programmed the controllers into the hotel's key card system so guests can activate the air conditioning when they enter their room along with the lighting.” The user-friendly RC-E4 remote control unit has an easy-to-read control panel and allows hotel guests to adjust cooling or heating within a set temperature range without being able to over-ride important system functionality.

